

# API

- [API Overview](#)
- [Steps of using API](#)

# API Overview

DSP API provides range of dsp dashboard related solutions to dsp clients of the online sphere. This allows dsp clients to avail dashboard services through API without needing to use DSP dashboard platform.

---

## Available services

### **Campaign**

Campaign creation and related services needed to create campaign.

### **Audience**

Audience creation and related services needed to create audience

### **Creative**

Creative creation and related services needed to create campaign.

### **Report**

Different report fetching for corresponding campaign.

---

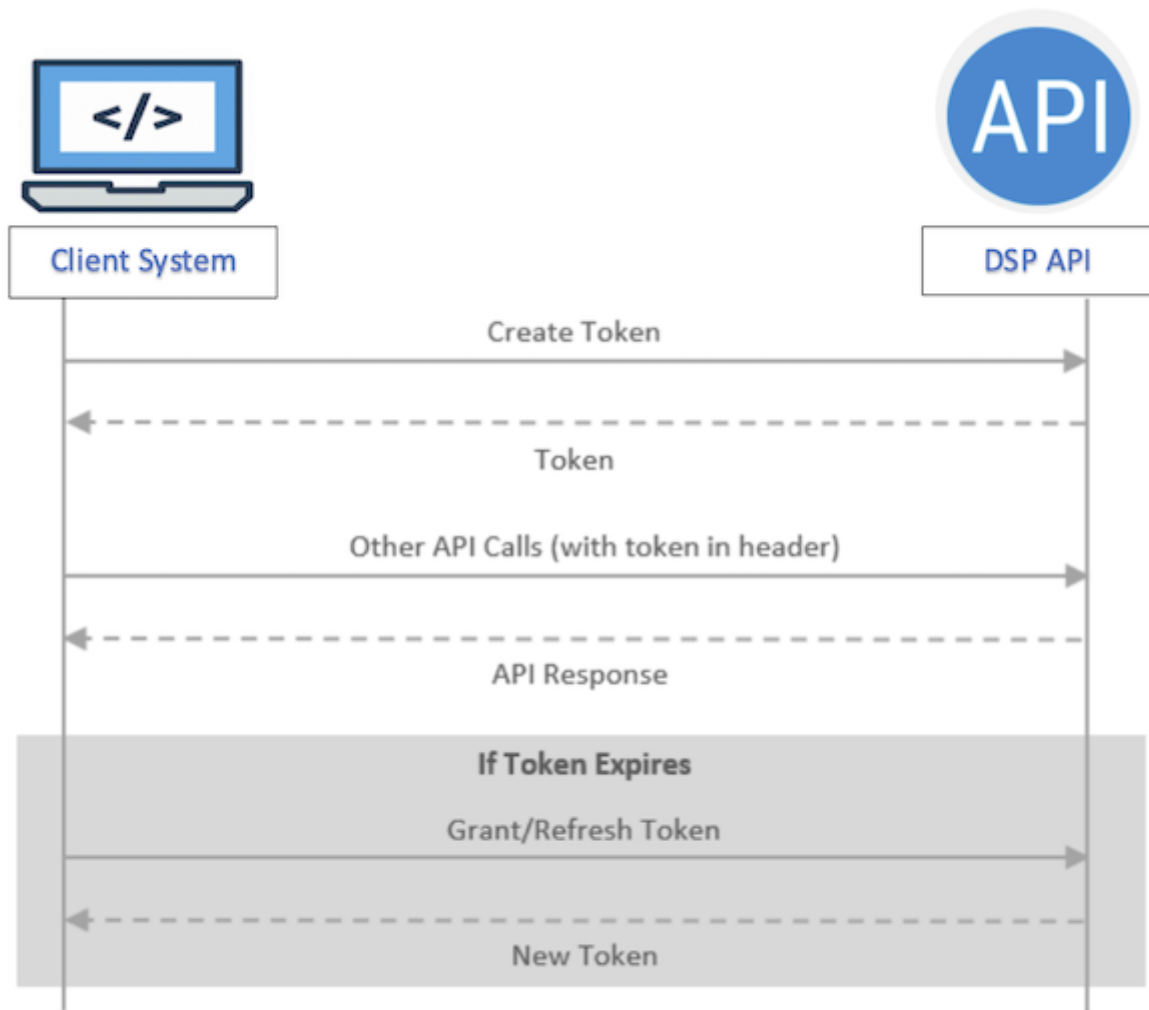
## Auth access token management overview

DSP API auth access tokens are credentials to access DSP APIs. These tokens inform the API that the bearer of the token has been permitted to access the API and perform different actions according to the allowed scope.

---

## Auth access token management flow

Access token creation activities are initiated by the client system. The following flow describes the token life cycle -



## Auth access Token Management Steps

- Before accessing any DSP APIs, call the [Get Access Token API](#) to get authorization token.
- Use this token value in the "Authorization" header for accessing future API calls.
- Before the end of the current token lifetime Get Access Token API again to get a new token against your existing token. You will have to use the new token for subsequent other API calls.

# Steps of using API

Using API one can get analytics of Eskimi platform as well as do other operations like creating campaigns etc. In this article the steps of using API is described.

## Create API client secret and token from Eskimi profile:

1. In the dashboard UI page, in the top right corner click the **three dot icon**.
2. Click on **"API Clients"**.
3. In API Clients UI page, in the top right corner click **"Add Client"**.
4. Enter the **Client name** (The name does not matter, it won't be used for the access token), and click on **"Generate"** for Client Secret.
5. Click Save button
6. After refresh, you will be able then to click **"Generate Client Token"** button.
7. Add your account password for security reasons and click **"Confirm Identity & Generate"**
8. Your token will be generated and click "Copy" to save and use it for later.
9. Click Save

## Edit Client

**Client Name**

Arunas B.

**Client Secret**

6QxNhoRVInH4aKpykJ6mWskZhUW0uw3Alt

Copy

generate

**Your Password**

*Please enter your own password for security reasons*

Confirm Identity & Generate

**Client Token**

A client token for API requests

Copy

generate

**Status**

Enabled

Save

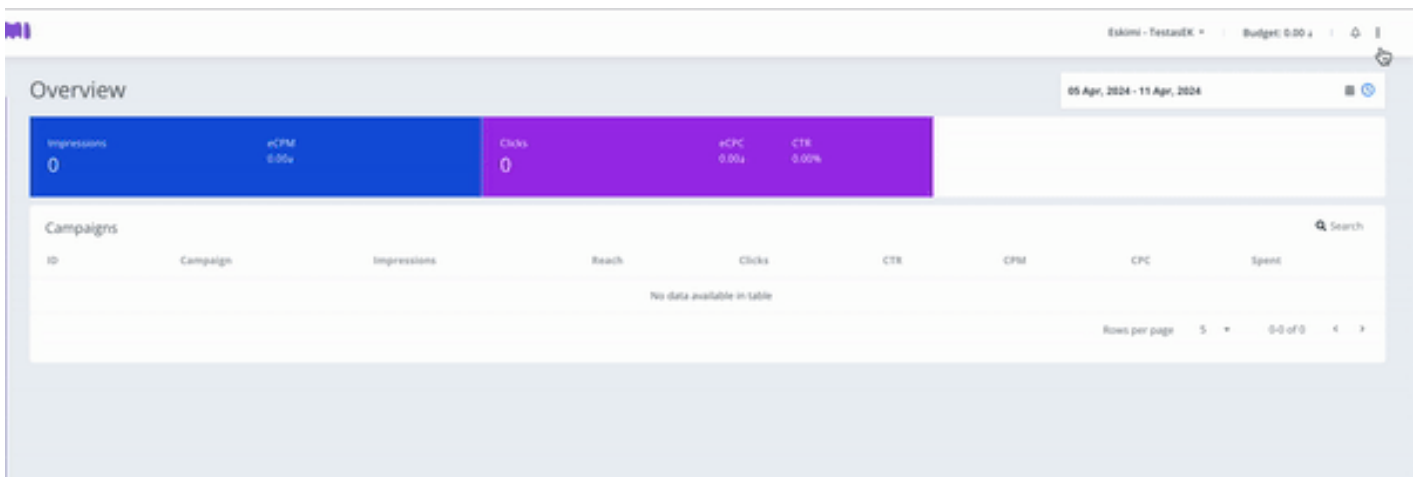
CANCEL

Token expiration term: 1 year.

## Create API client secret from Eskimi profile and create token through API:

1. In the dashboard UI page, in the top right corner click the **three dot icon**.
2. Click on **"API Clients"**.
3. In API Clients UI page, in the top right corner click **"Add Client"**.
4. Enter the **Client name** (The name does not matter, it won't be used for the access token), and click on **"Generate"** for Client Secret.

5. Save the changes and the API client will be created that will be used for getting Access Token.



- Get access token. For getting access token the documentation is provided here:  
<https://dsp-api.eskimi.com/docs/api/auth/>

For the access token we recommend using [postman](#), as it's show in the video. Here is a JSON format request for the authentication endpoint:

```
{
  "grant_type": "eskimi_dsp",
  "username": "dsp_username",
  "password": "Password",
  "client_id": client_id,
  "client_secret": "client_secret"
}
```

A request example for a reporting endpoints:

```
{
  "campaignIds": [
    000000
  ],
  "dateFrom": "2023-05-08",
  "dateTo": "2023-05-12",
  "byDate": true,
  "byCampaign": false
}
```

From your parent account, you can access your child account data via API.

---

- After getting the access token API can be used using the access token. The API documentation: <https://dsp-api.eskimi.com/docs/api/v1/>
- Please watch the video to understand the process better:

<https://www.youtube.com/embed/9yn3oZAynOg>

---

## API Limitations:

- Currently you're able to create only Banner or Native type campaigns via API, currently we do not have functionality to create Video type campaigns.
- Not all reporting splits are available in the reporting API endpoints, you can see all available splits [here](#).
- Total reach numbers will be different from the reports and the API, as dashboard reporting using different logic for counting reach (This is being worked on, so total reach numbers would match API and dashboard reporting part).
- Currently there is no current endpoint, everything is being reported with \$.